



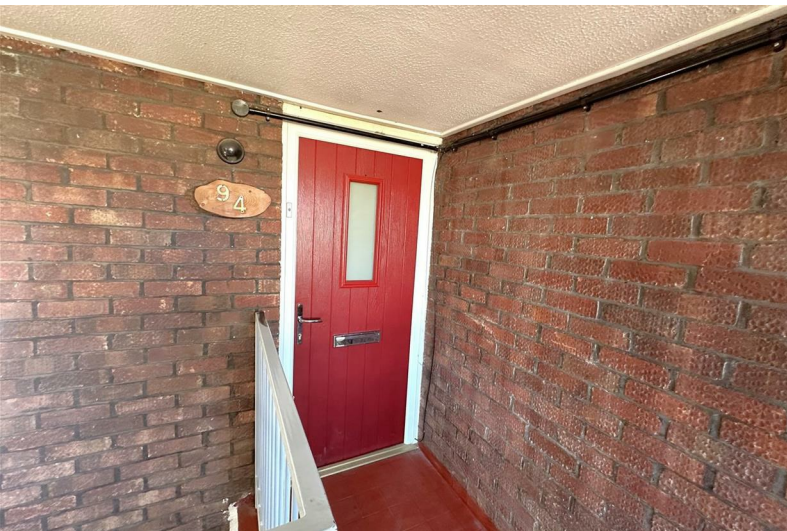
**STUART
CHARLES**
ESTATE AGENTS



Orkney Walk

, Corby, NN17 2QT

£130,000



Orkney Walk

, Corby, NN17 2QT

£130,000



Entrance Hall

Entered via a double glazed door,

Lounge/Diner

9'10 x 15'4 (3.00m x 4.67m)

Double glazed window to side elevation, and to rear with door to balcony, two radiators, tv point, telephone point.

Kitchen/Breakfast Room

10'8 x 11'10 (3.25m x 3.61m)

Fitted to comprise a range of base and eye level units with single steel sink and drainer, Integrated electric cooker and gas hob , space for automatic washing machine and tumble dryer, double glazed window to front elevation

Landing

Stairs rising, doors to:

Bedroom One

14 x 10.6 (4.27m x 3.05m.1.83m)

Double glazed window to front elevation, radiator.

Bedroom Two

11.8x9.10 (3.35m.2.44mx2.74m.3.05m)

Double glazed window to front elevation, radiator.

Bedroom Three

8x10.5 (2.44mx3.05m.1.52m)

Double glazed window to front elevation, radiator.

Shower room

Fitted to comprise a two piece suite consisting of a Freestanding shower and low level wash hand basin, with a low level pedestal. a radiator, and double glazed window to rear elevation.

Outside

A shared green space encloses the whole block.



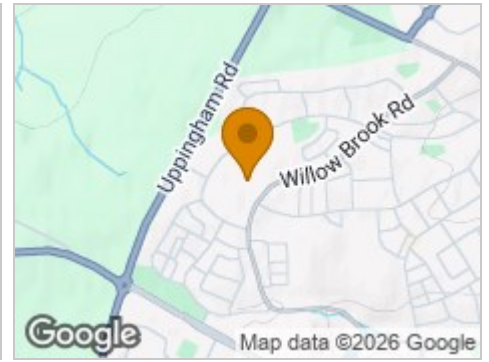
Road Map



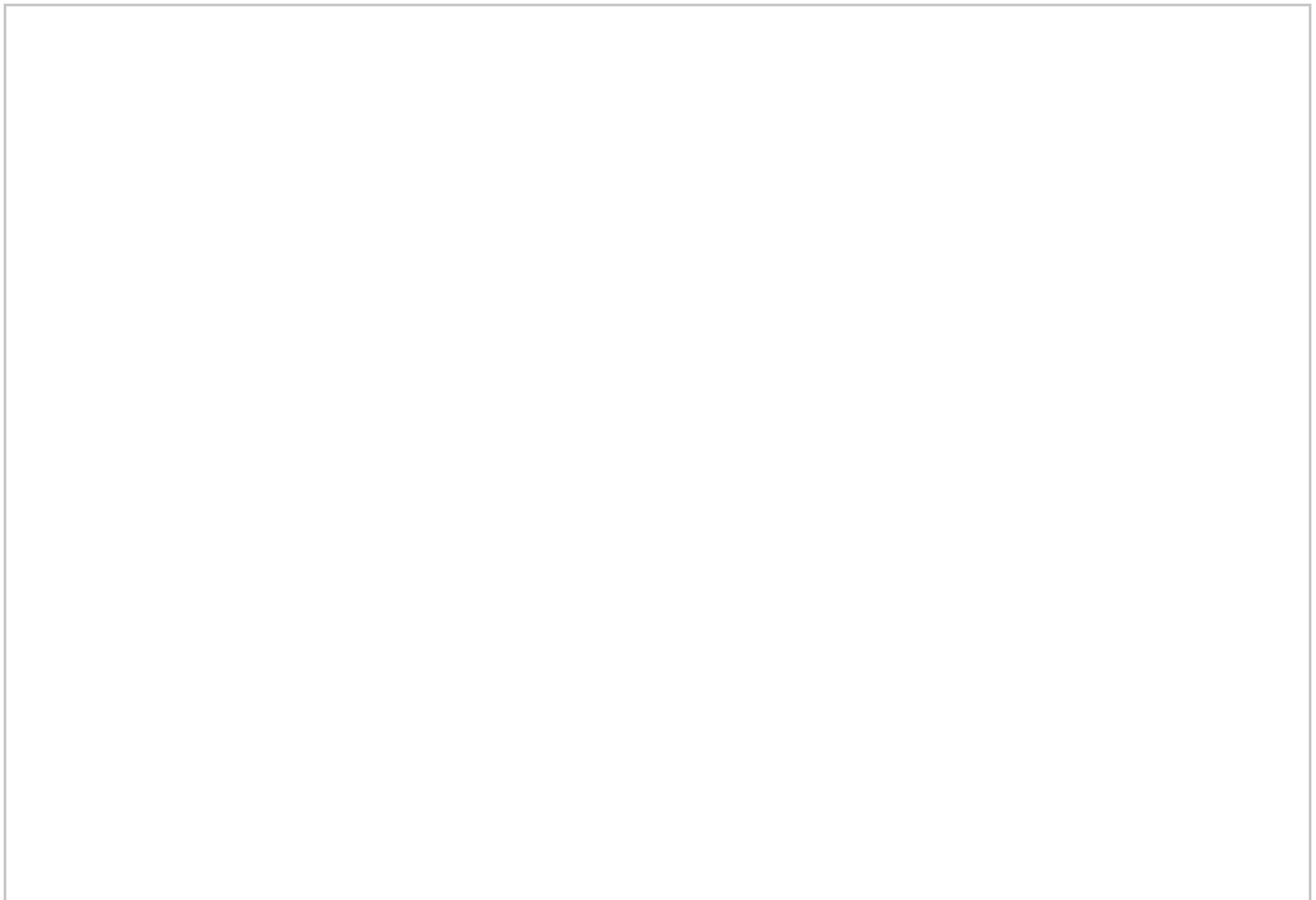
Hybrid Map



Terrain Map



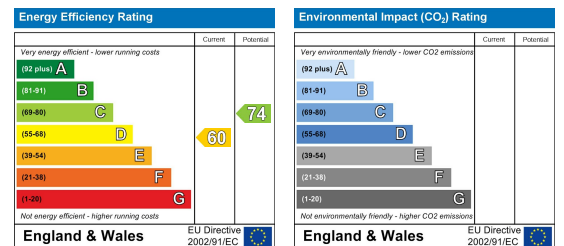
Floor Plan



Viewing

Please contact our Stuart Charles Estate Agents Office on 01536 234264 if you wish to arrange a viewing appointment for this property or require further information.

Energy Efficiency Graph



These particulars, whilst believed to be accurate are set out as a general outline only for guidance and do not constitute any part of an offer or contract. Intending purchasers should not rely on them as statements of representation of fact, but must satisfy themselves by inspection or otherwise as to their accuracy. No person in this firm's employment has the authority to make or give any representation or warranty in respect of the property.